

January 2024 Climate Summary

Significant Weather Events:

January 2024 told an interesting weather story across Texas, as 2023 evolved into 2024, the relatively quiet pattern that dominated much of the fall and early winter broke to bring large temperature swings, strong winds, heavy precipitation, and a hint of severe weather. Some notable events are listed below:

- January 4- An EF0 tornado touched down in Brazoria County
- January 8- A powerful low pressure system brought strong winds across the state with some severe thunderstorms for Southeast Texas.
 - Fort Worth Meacham airport reported a 64 mph wind gust not associated with thunderstorms. Sizeable portions of the state experienced gusts >50 mph
 - Gonzales, Tx reported hail up to 3 inches in diameter.
 - A tornado touched down in Coldspring, Tx
- January 13-15 - A powerful cold front moved through Texas bringing the coldest temperatures in many parts of the State since late 2022. Light snow and ice accumulations occurred across a sizable portion of the State.
- January 21-27 - A multi-day period of heavy rain unfolded across mainly East and Southeast Texas, with places seeing over one foot of rain. High water rescues had to be performed in Montgomery County.
 - A CoCoRaHS station in Montgomery County saw 16.47” of rain for this 7-day time period
 - This same station recorded 7.25” of rain on January 24.
- January 26- 4” hail was reported in Newton, Tx.

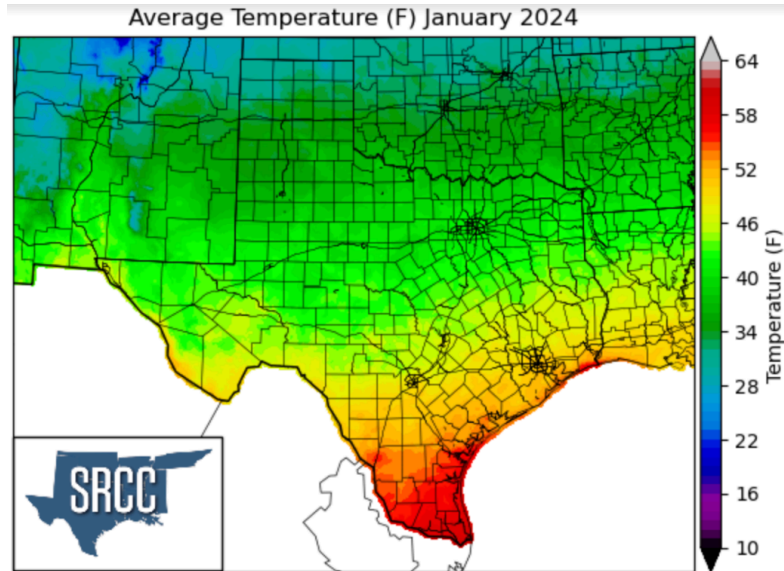
Temperature:

January brought forth significant variations in temperature for Texas. The month can be divided into three parts:

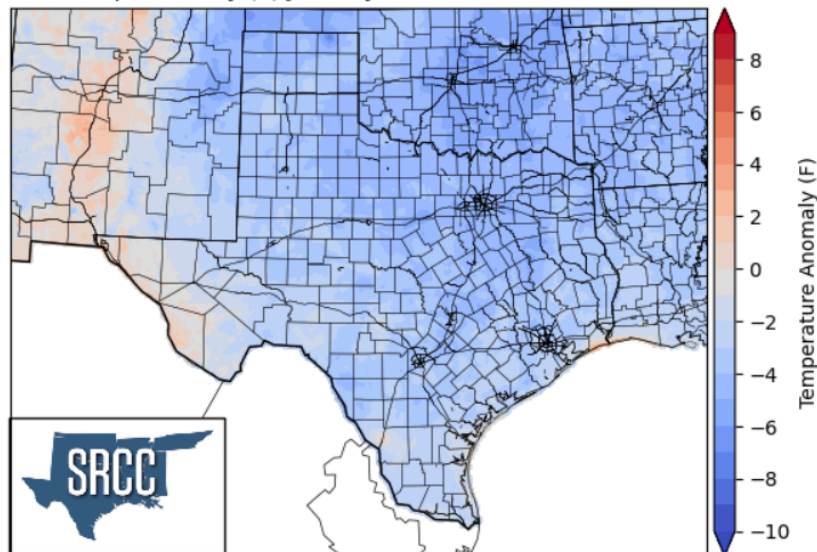
- January 1-12 saw near normal temperatures with oscillations from slightly above to slightly below normal.
- January 13-20 saw a significant arctic outbreak with some daily average anomalies being over 20°F below normal for much of the State.
- January 21-31 saw mainly slightly above average temperatures for most of Texas, giving the State a reprieve from the intense cold experienced mid-month.

Looking at the month as a whole, we note that the State almost exclusively experienced below normal temperatures, with anomalies being several degrees Fahrenheit below normal. Much of the state saw monthly averages between 35°F and 60°F. The extremes across the State are as follows:

- The coldest monthly average temperature was 32.3°F in Follet, Tx located in Lipscomb county
- The warmest monthly average temperature was 61.8°F at the Brownsville South Padre Island International Airport in Cameron County



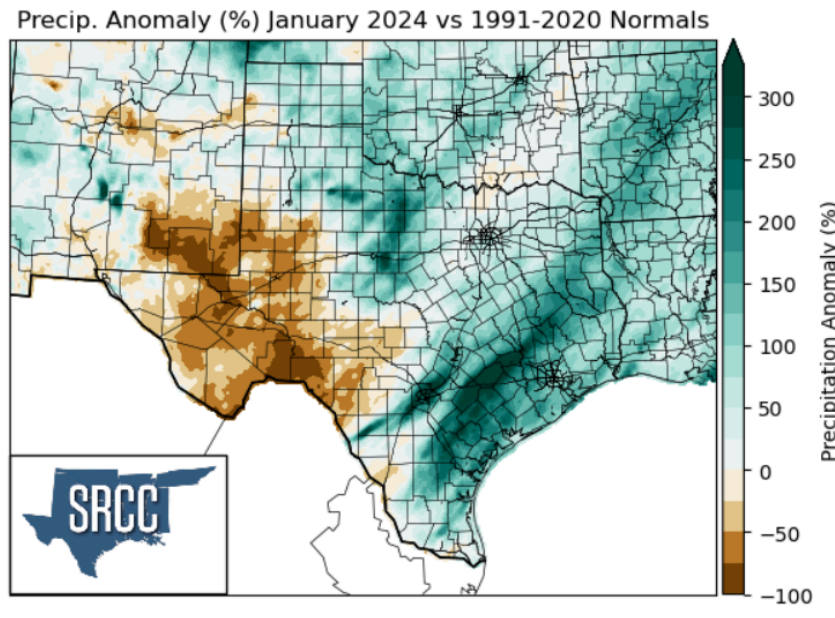
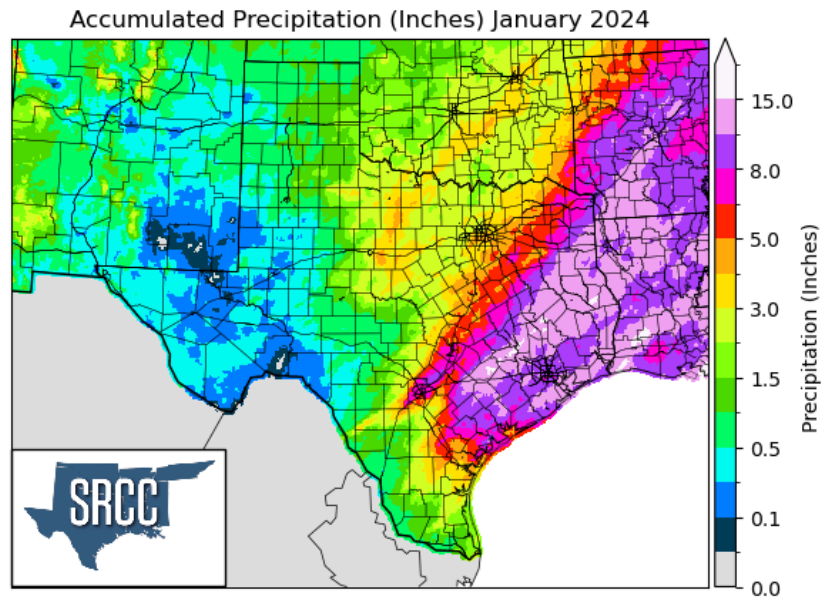
Mean Temp Anomaly (F) January 2024 vs 1991-2020 Normals



Precipitation:

Almost all of the State saw appreciable rainfall. A streak of extremely high precipitation totals can be noted across East and Southeast Texas. A persistent rainy pattern that brought repeated disturbances, each producing heavy rainfall, established itself between January 21 and 27. A narrow corridor saw almost 20 inches of rainfall for January due to a band of thunderstorms that set up over the area. Notable populated areas saw January 2024 rank among their top 10 rainiest Januaries, such as Houston, which saw January 2024 place as its 6th rainiest January with 8.77"

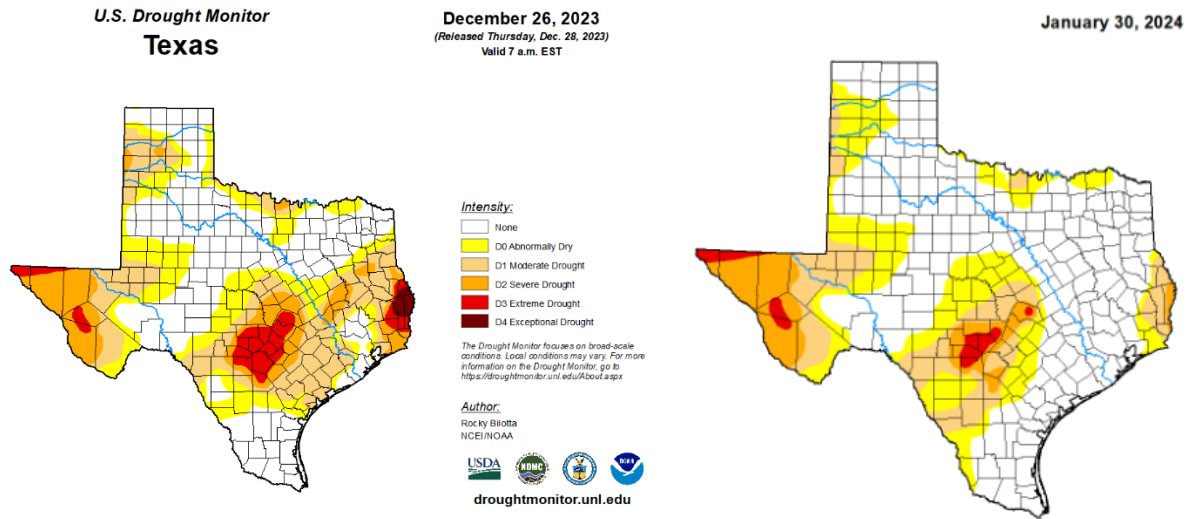
or rain, College Station, which saw its 5th rainiest January with 7.78” of rain, and Galveston, which saw its 6th rainiest January with 8.59” of rain. Across the state, the greatest rainfall total was 18.92” from a CoCoRaHS site in Montgomery County.



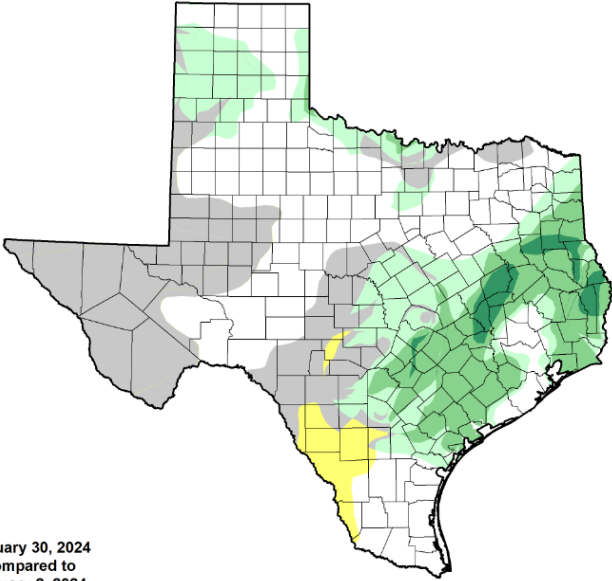
Drought:

Extreme rainfall across East and Southeast Texas allowed for significant drought improvements across this portion of the State. Texas for the most part saw either an improvement or no change in drought classifications, except for areas near the Texas/Mexico border near Laredo. The drought classifications as well as the change in the coverage of each drought classification through the month of January are summarized in the table below:

Drought category	Beginning of January (January 2, 2024)	End of January (January 30, 2024)	% Change
Abnormally dry or greater	60.4%	43.1%	-17.3%
Moderate drought or greater	39.7%	22.8%	-16.9%
Severe drought or greater	17.8%	9.7%	-8.1%
Extreme drought or greater	5.7%	1.9%	-3.8%
Exceptional drought	0.7%	0.0%	-0.7%



U.S. Drought Monitor Class Change - Texas
4 Week



January 30, 2024
compared to
January 2, 2024

droughtmonitor.unl.edu



- 5 Class Degradation
- 4 Class Degradation
- 3 Class Degradation
- 2 Class Degradation
- 1 Class Degradation
- No Change
- 1 Class Improvement
- 2 Class Improvement
- 3 Class Improvement
- 4 Class Improvement
- 5 Class Improvement